



02 March 2012

WWF Forest & Climate Initiative

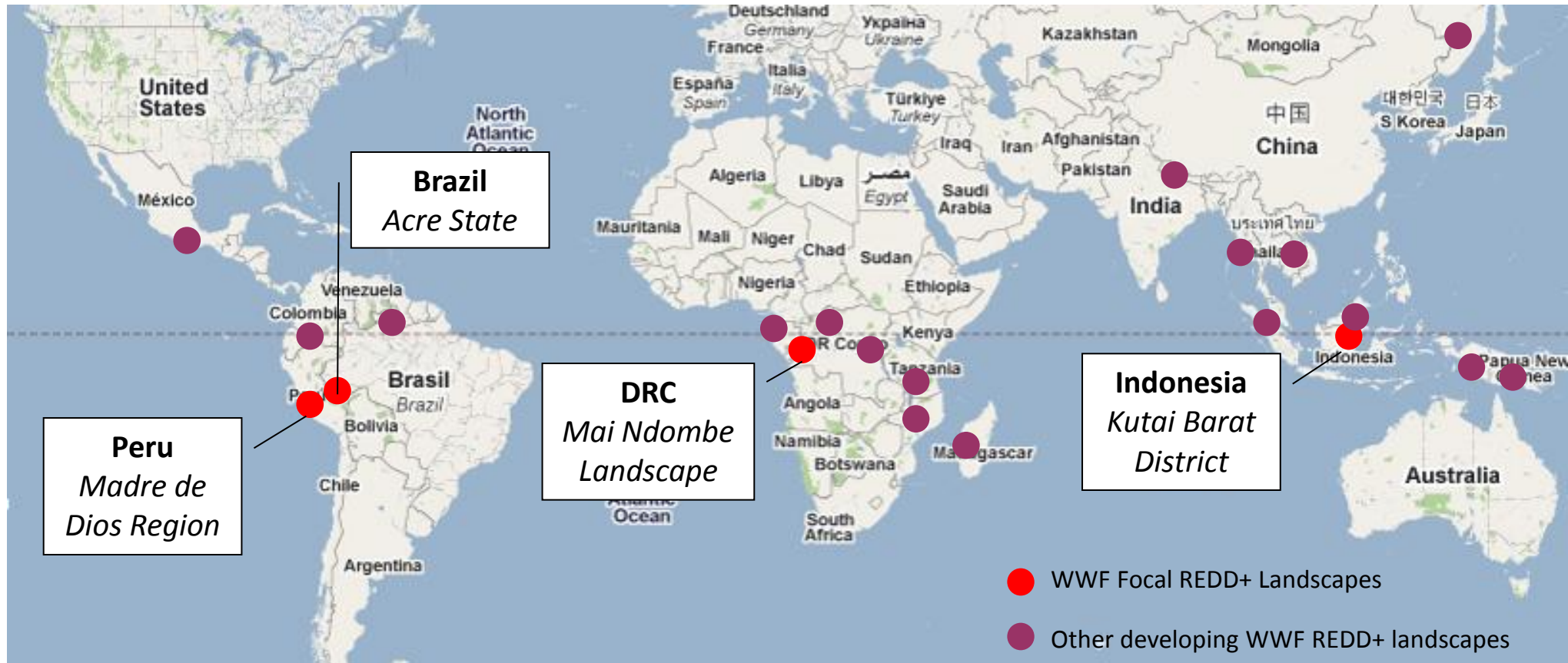
REDD+ at Scale : Mai Ndombe

Paul Chatterton
Douala, Cameroon

*Valuing the world's forests for the
benefit of the climate, people & nature*



Geographic Focus of WWF REDD+ Activities



ABC of REDD+

WWF is trialling REDD+ at scale in the three major rainforest blocks across the planet – the **A**mazon, **B**orneo and **C**ongo



Four Challenges for REDD+

In these landscapes, we are exploring ways to resolve four major systemic challenges of REDD+:

Issue 1: Scale - REDD+ projects tend to change land use across only hundreds or thousands of hectares of forests – far too small to influence climate change.

- **Challenge:** *REDD+ projects and programmes must be designed to influence deforestation across landscapes of multiple millions of hectares.*

Issue 2: Integration - REDD+ projects tend to focus on only one methodology - however multiple threats often affect a forest landscape.

- **Challenge:** *Landscape scale REDD+ solutions that address a range of drivers and link with low carbon development strategies.*

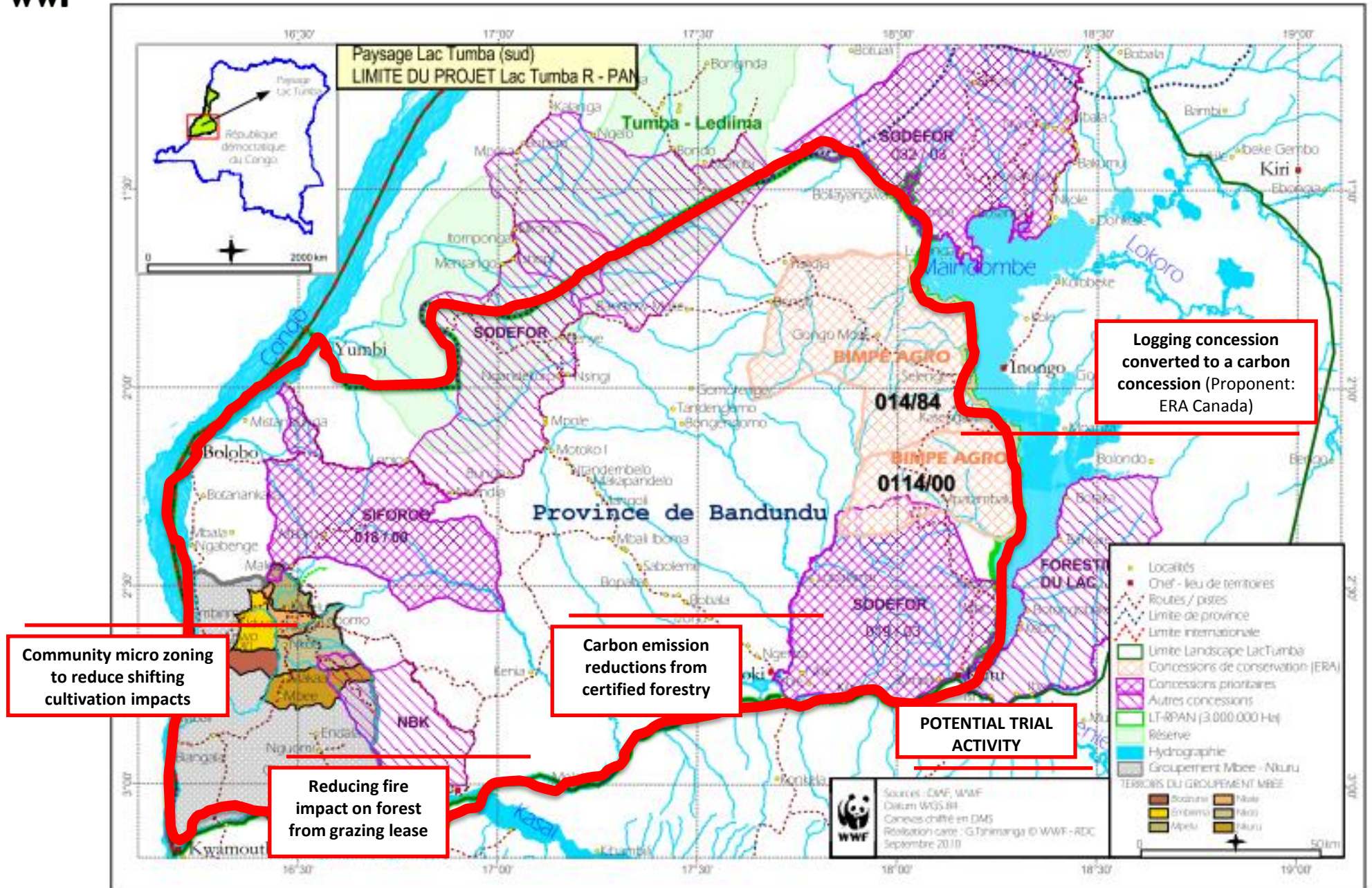
Issue 3: Governance - REDD+ projects establish their own governance institutions and arrangements but these risk be in addition to or separate from existing forest management structures.

- **Challenge:** *Embedding REDD+ in existing forest and climate governance structures*

Issue 4: Sustainable Finance: Government and aid finance will not be sufficient to address the problem. How can market and other sources be harnessed to support deforestation reductions?

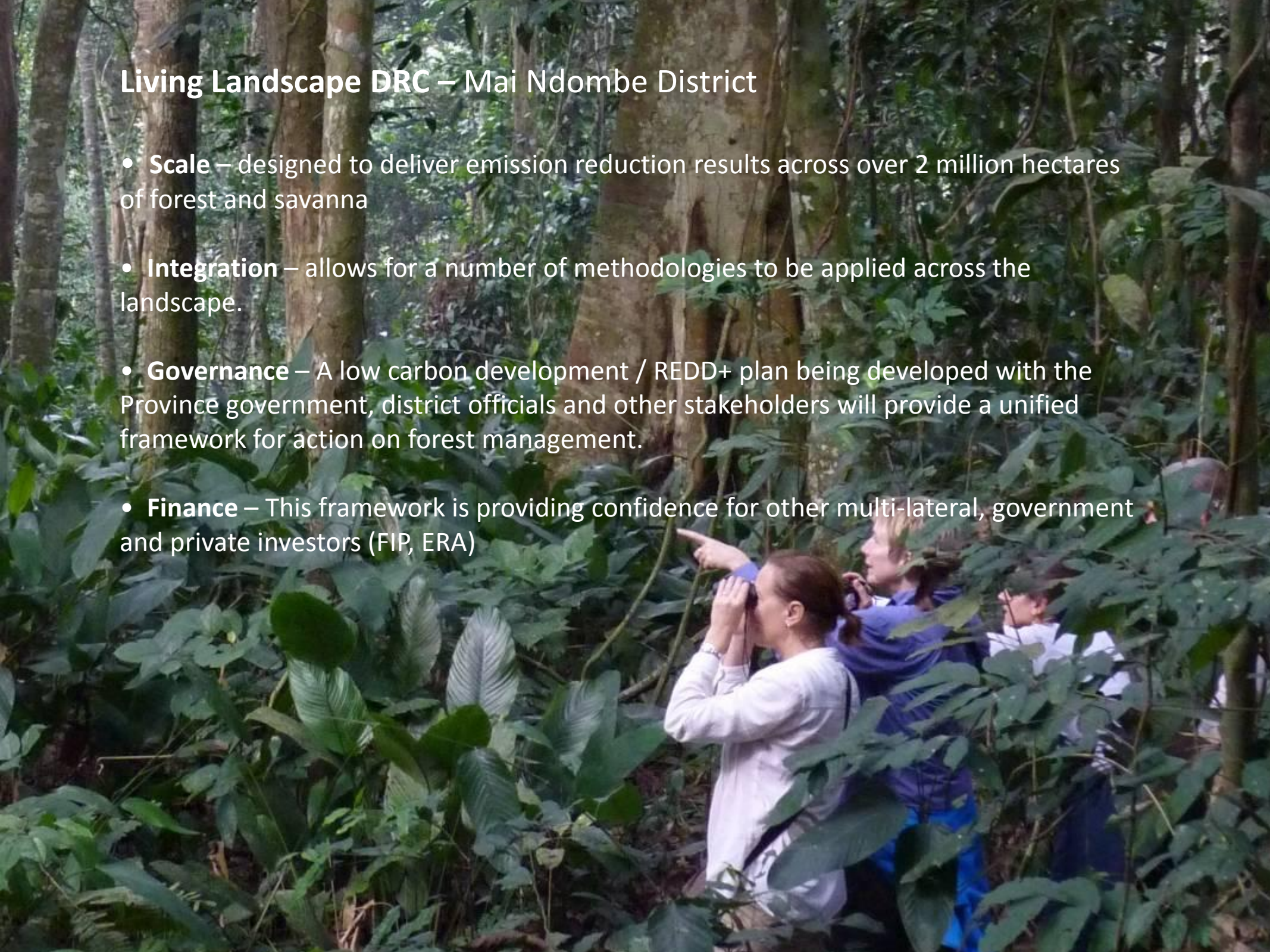
- **Challenge:** *Identifying mechanisms to support market investment at scale in line with the safeguards of the UNFCCC and forest governance systems.*

Living Landscape DRC – Mai Ndombe District



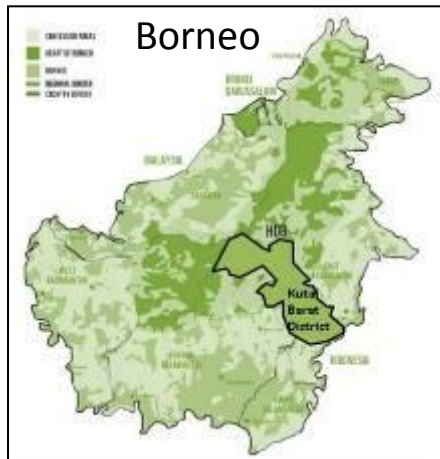
Living Landscape DRC – Mai Ndombe District

- **Scale** – designed to deliver emission reduction results across over 2 million hectares of forest and savanna
- **Integration** – allows for a number of methodologies to be applied across the landscape.
- **Governance** – A low carbon development / REDD+ plan being developed with the Province government, district officials and other stakeholders will provide a unified framework for action on forest management.
- **Finance** – This framework is providing confidence for other multi-lateral, government and private investors (FIP, ERA)



Living Landscape Indonesia - Kutai Barat District

BioVision 2015



Forest certification

(350,000 ha FSC
13,000 ha RSPO)
Certification of forest
management and oil palm
plantations on track or achieved.

Spatial planning

(200,000 ha)

Develop green spatial planning and government
development plan that moves destructive
activities out of priority forest areas and creates
corridor between two National Parks

Community conservation areas

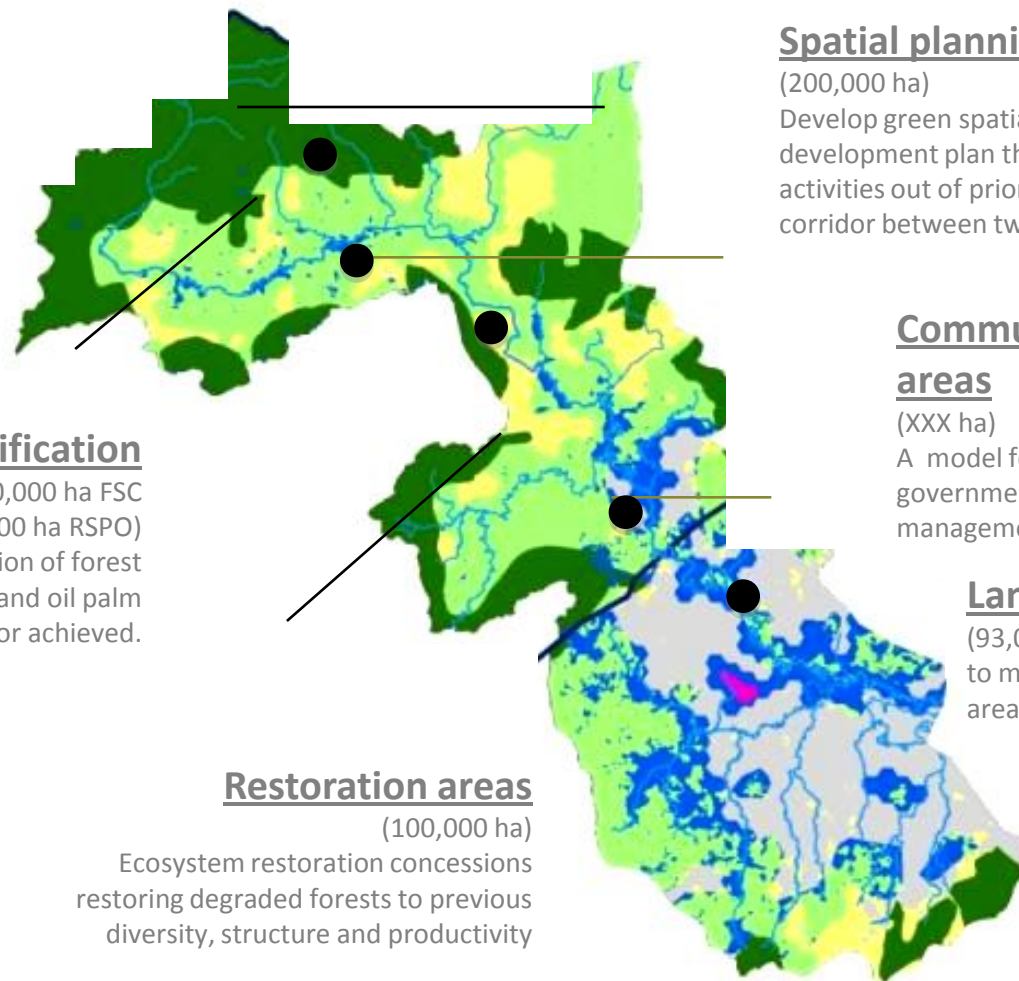
(XXX ha)

A model for community participation and
government recognition over the forest
management

Land swaps

(93,000 ha)

to maintain forest outside forest
area as sustainable business model



Restoration areas

(100,000 ha)

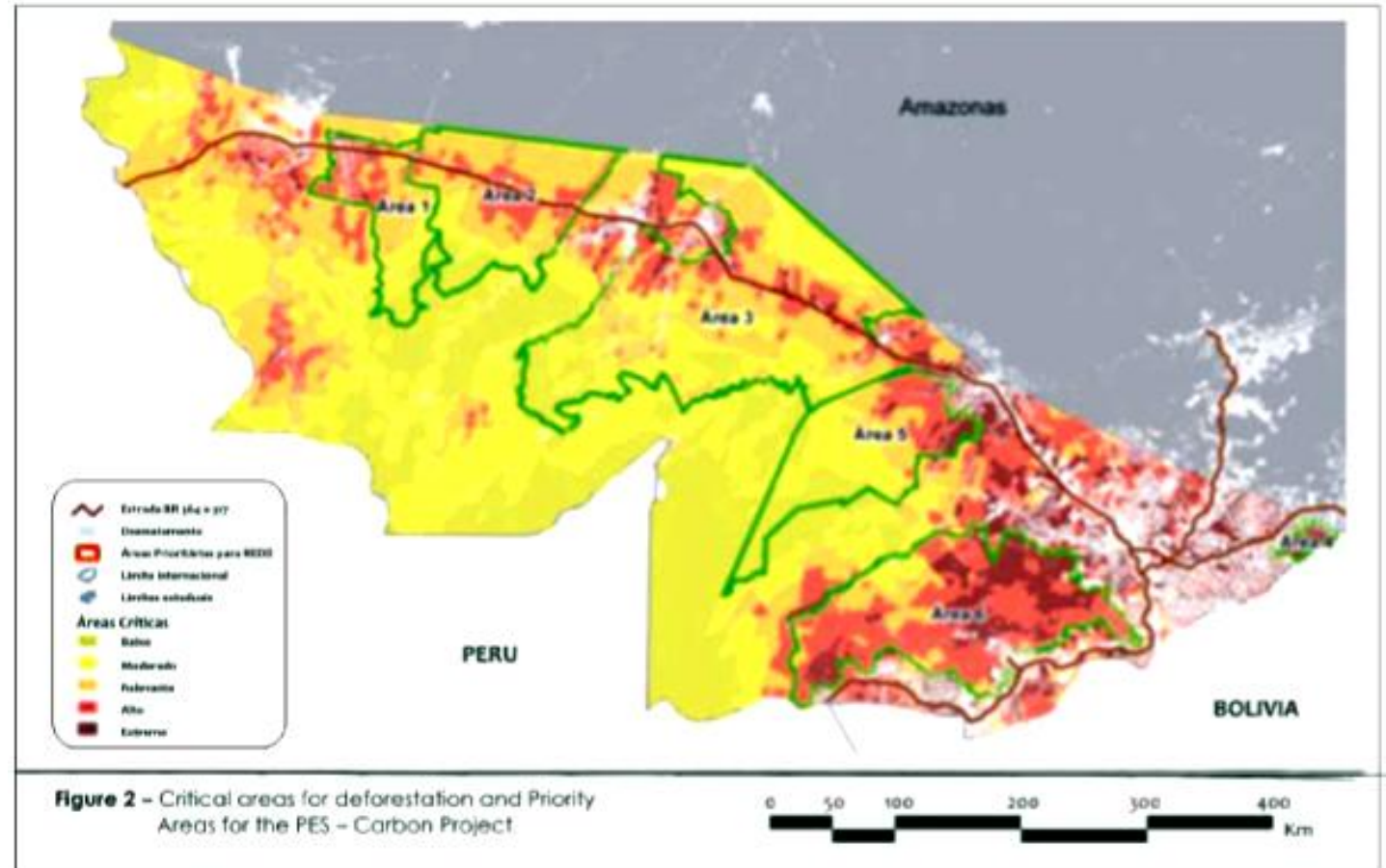
Ecosystem restoration concessions
restoring degraded forests to previous
diversity, structure and productivity

Legend

- Protected Forest
- BMP in Ecosystem and HCV
- BMP
- Restoration
- Sustainable Development Area
- KL Cagar Alam

Goal: A district level low carbon development strategy managed as part of the District Forest Plan and implementing the Heart of Borneo Agreement signed between Indonesia, Malaysia and Sabah. This will be partly financed by the USD 28.5 million US-Indonesia debt for nature swap announced in Nov 2011.

Living Landscape Brazil - Acre ProAmbiental Programme

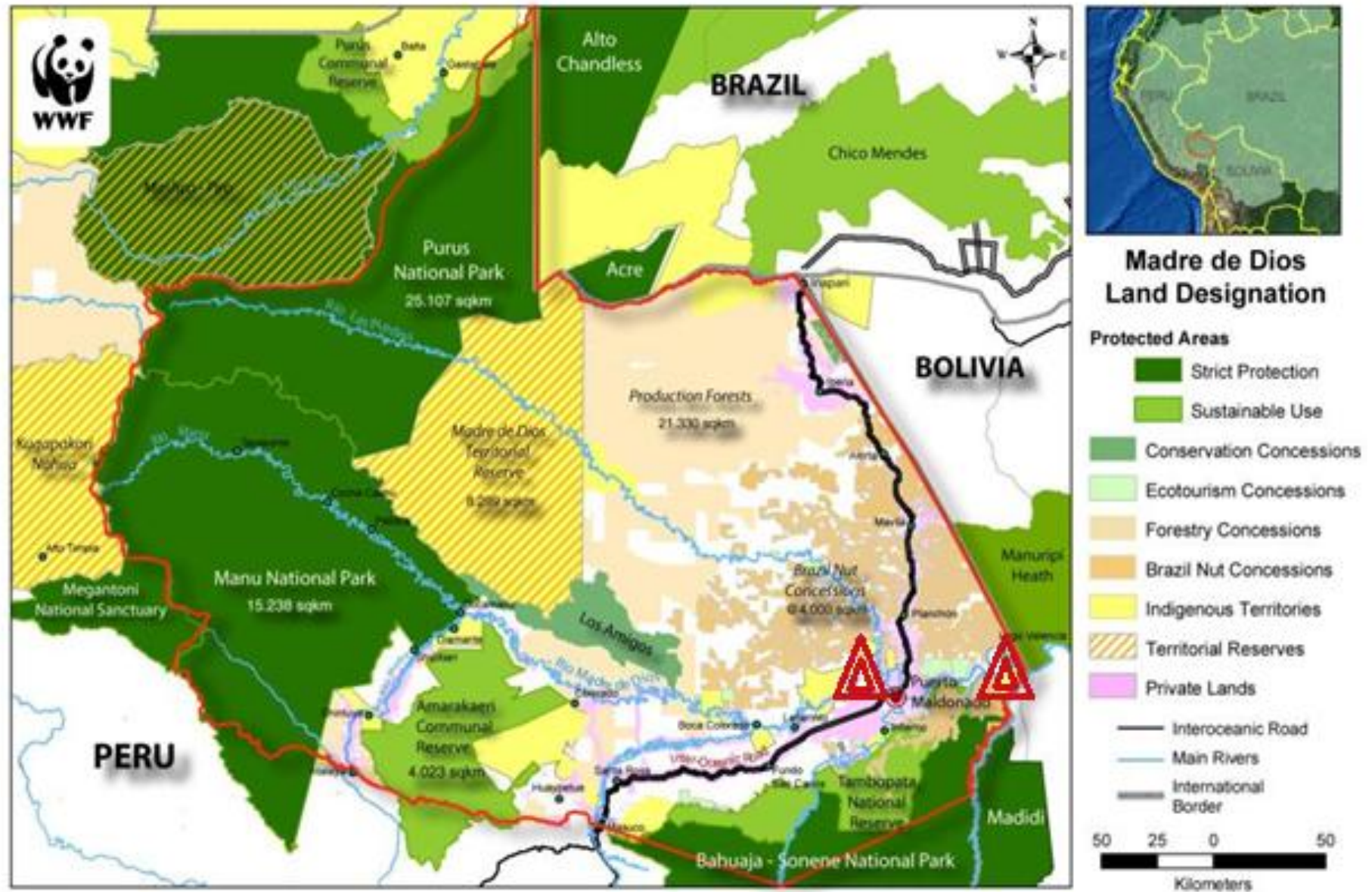


PES system at State level securing emissions reductions supported by water, carbon and other payments

Sustainable Property Certification

- Small-scale producers: ca. 2000 families to date
 - Voluntary 9 year contract - forest conservation: no deforestation or burning; restoration of degraded land
 - Payments for sustainable land use: US\$200-300/yr plus technical assistance for production & marketing

Living Landscape Peru – Madre de Dios Region



A similar REDD+ / PES system is being designed immediately across the border in Madre de Dios Region, Peru



Forest finance facility

Convening thought leaders in forest carbon finance

*Generating the potential for market investment
in REDD+ at scale*



*Investors survey
(Nov 2009)*



Forest Carbon Finance Summit (Feb 2010)

*Forest Bonds Report
(Sep 2011)*





Four Challenges for REDD+

Challenge 1: Scale - REDD+ projects and programmes must be designed to influence deforestation across landscapes of multiple millions of hectares.

Challenge 2: Integration - Landscape scale REDD+ solutions must address a range of drivers and link with low carbon development strategies.

Challenge 3: Governance - Embedding REDD+ in existing forest and climate governance structures

Challenge 4: Finance - Identifying mechanisms to support market investment at scale in line with the safeguards of the UNFCCC and forest governance systems.

A REDD+ Learning system





Thank you

www.panda.org/forestclimate

Paul Chatterton
Deputy Leader, Forest and Climate
WWF

pc@wwf.at



© WWF/Paul Chatterton